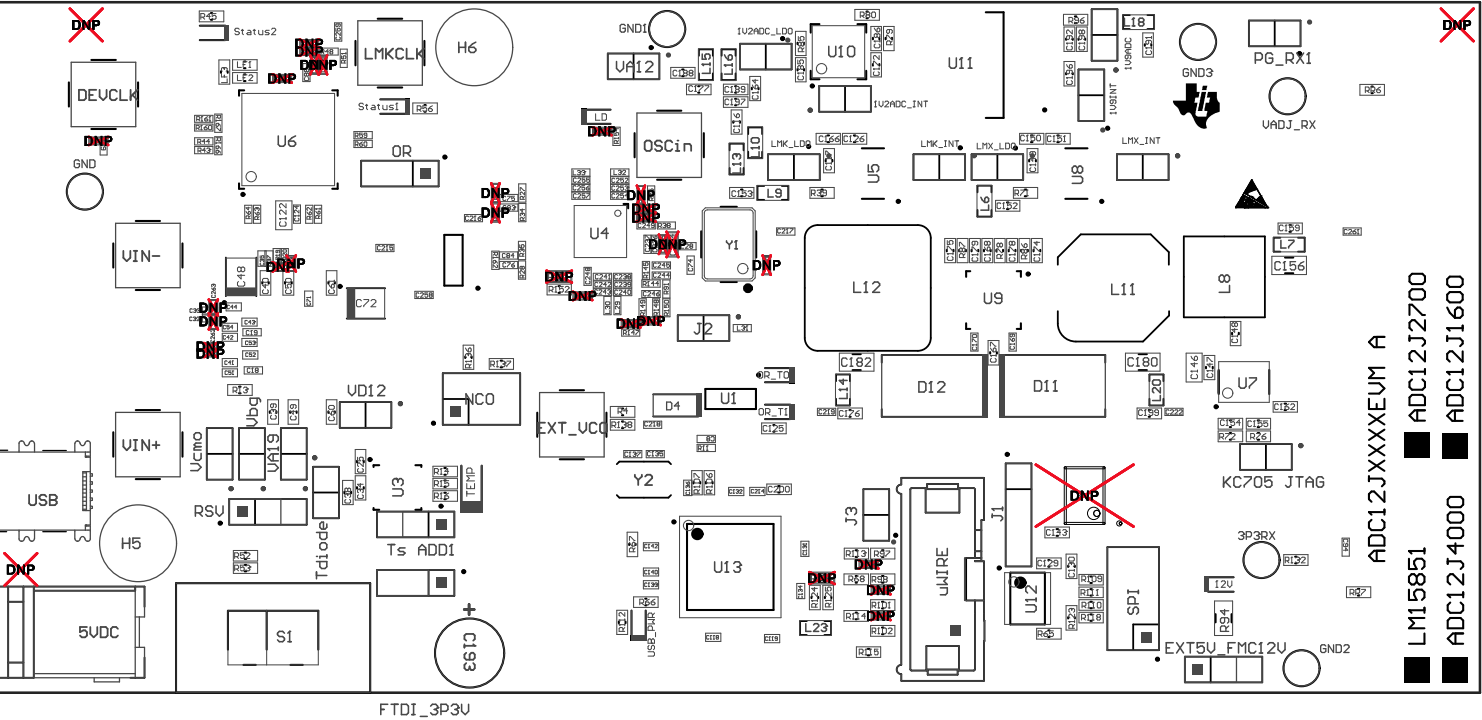


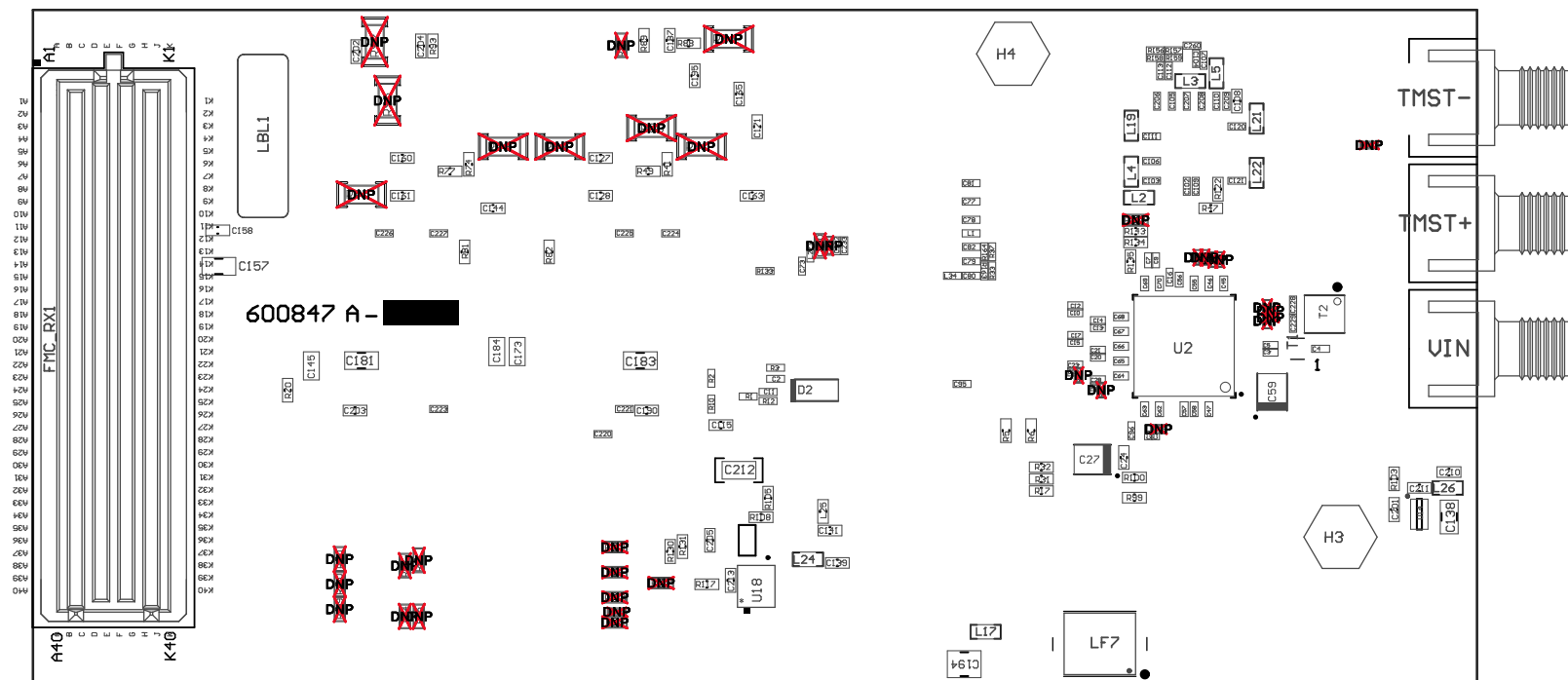
- Z21 ■ Install label in silkscreened box after final wash. Text shall be 8 pt font. Text shall be per Table 1
- Z22 ■ These assemblies are ESD sensitive, ESD precautions shall be observed.
- Z23 ■ These assemblies must be clean and free from flux and all contaminants. Use of no clean flux is not acceptable.
- Z24 ■ These assemblies must comply with workmanship standards IPC-A-610 Class 2., unless otherwise specified.



COMPONENTS MARKED 'DNP' SHOULD NOT BE POPULATED, AND MAY NOT BE IN BILL OF MATERIALS
ASSEMBLY VARIANT: 002_ADC12J4000EVM

TABLE 1	
Variant	Label text
001	LM15851EVM
002	ADC12J4000EVM
003	ADC12J2700EVM
004	ADC12J1600EVM

PCB VIEWED FROM TOP SIDE	BOARD #: 600847	REV: A	SVN REV: Not In VersionControl
IGNORE -> Top Overlay			
PLOT NAME = Top Assembly Drawing	GENERATED : 9/29/2014 10:16:06 AM	TEXAS INSTRUMENTS	



COMPONENTS MARKED 'DNP' SHOULD NOT BE POPULATED, AND MAY NOT BE IN BILL OF MATERIALS
 ASSEMBLY VARIANT: 002_ADC12J4000EVM

PCB VIEWED FROM BOTTOM SIDE	BOARD #: 600847	REV: A	SUN REV: Not In VersionControl
	IGNORE -> Bottom Overlaid		
PLOT NAME = Bottom Assembly Drawing	GENERATED : 9/29/2014 10:16:07 AM	TEXAS INSTRUMENTS	